

Picotes Wines

Ne l bino stá la berdade

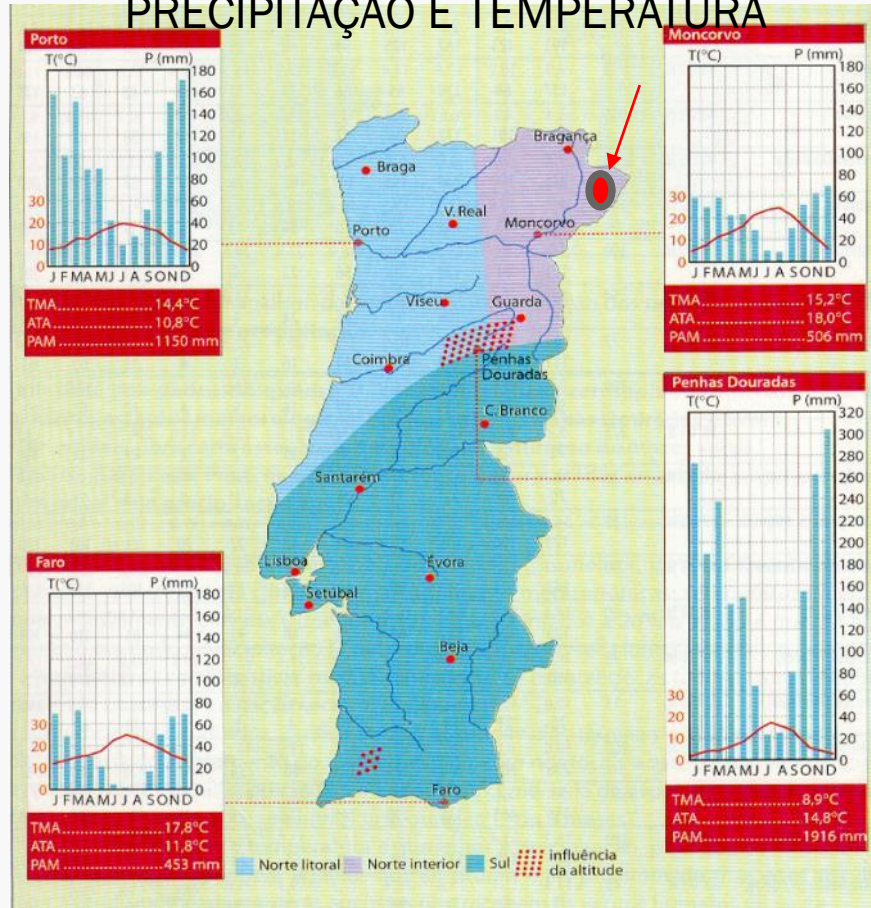


LOCATION

- Country: Portugal
- Region: Trás-os-Montes
- County: Miranda do Douro
- Village: Sendim
- *Terroir*: “Arribas do Douro”



PRECIPITAÇÃO E TEMPERATURA



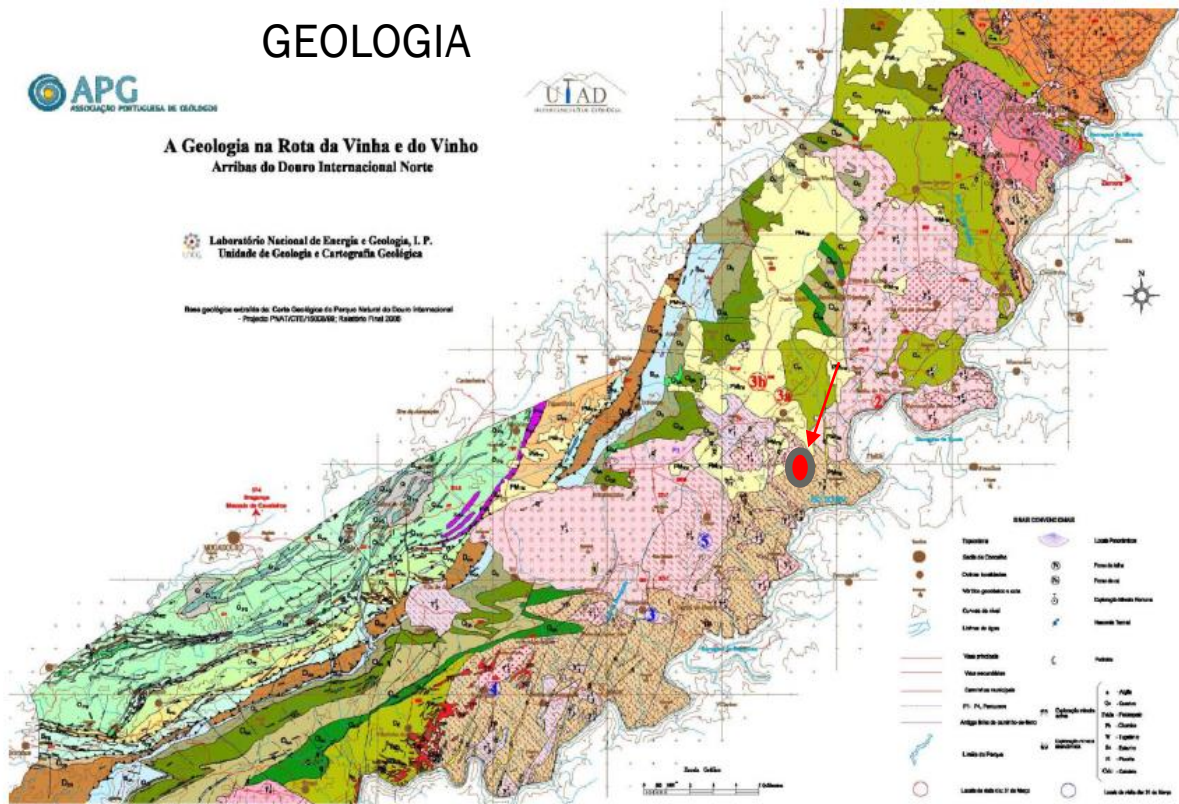
GEOLOGIA



A Geologia na Rota da Vinha e do Vinho Arribas do Douro Internacional Norte

Laboratório Nacional de Energia e Geologia, I. P.
Unidade de Geologia e Cartografia Geológica

Bases geológicas extraídas da Carta Geológica do Parque Natural do Douro Internacional
Projecto PIN/CTG/000096; Escala: 1:50 000



Carta geológica das Arribas do Douro Internacional Norte com a localização das paragens a efectuar em Portugal.

TERROIR

- Cliffs of the International Douro Natural Park
- Altitudes 550-750m
- Centenary old vines
- Traditional grape varieties
- Low incidence of diseases
- Soils rich in quartz and schist



Grifo
Dolomites Internazionali
José Jiménez Deaco Internazionali









VITICULTURE

- Organic and sustainable
- Preservation of soils and their native vegetation
- Maintenance of green aisles for animals
- No chemicals (maximum care with the environment)
- *“Living soils give us living wines”*







HARVEST

- Hand-picking grapes with the utmost care
- Fully sanitized equipment
- 20kg harvest boxes
- Fast carriage to winery
- Family and harmonious environment

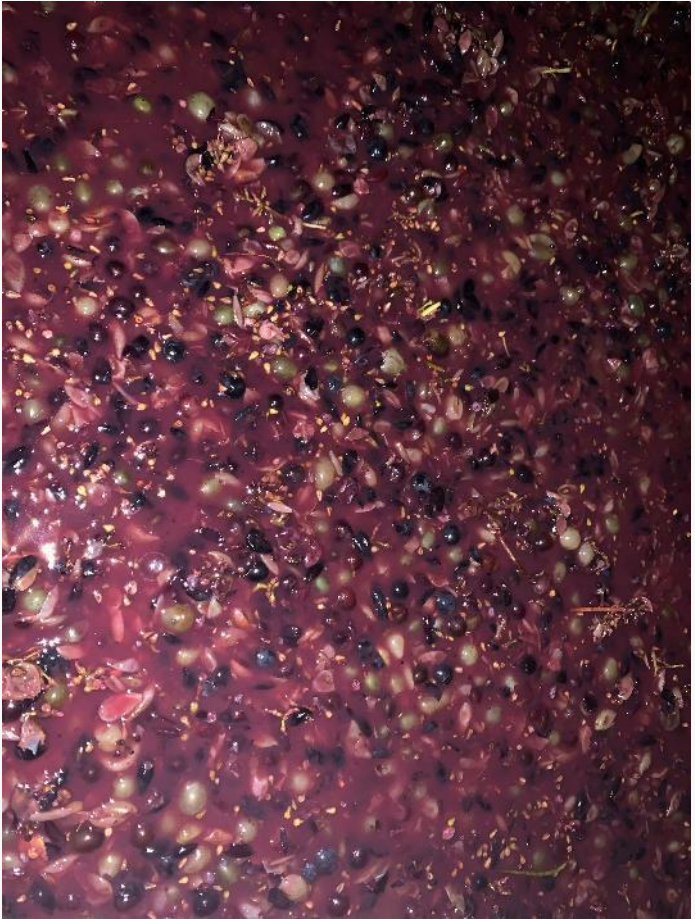






WINEMAKING

- Foot trodden in mill
- Spontaneous fermentation
- Indigenous yeasts
- Aging in used barrels and stainless steel
- Cellar with stable temperature and humidity







2021 WINES

- Picotes Palhete
- Picotes Branco
- Picotes Tinto
- Piçarrão Tinto (to be released in 2023)